



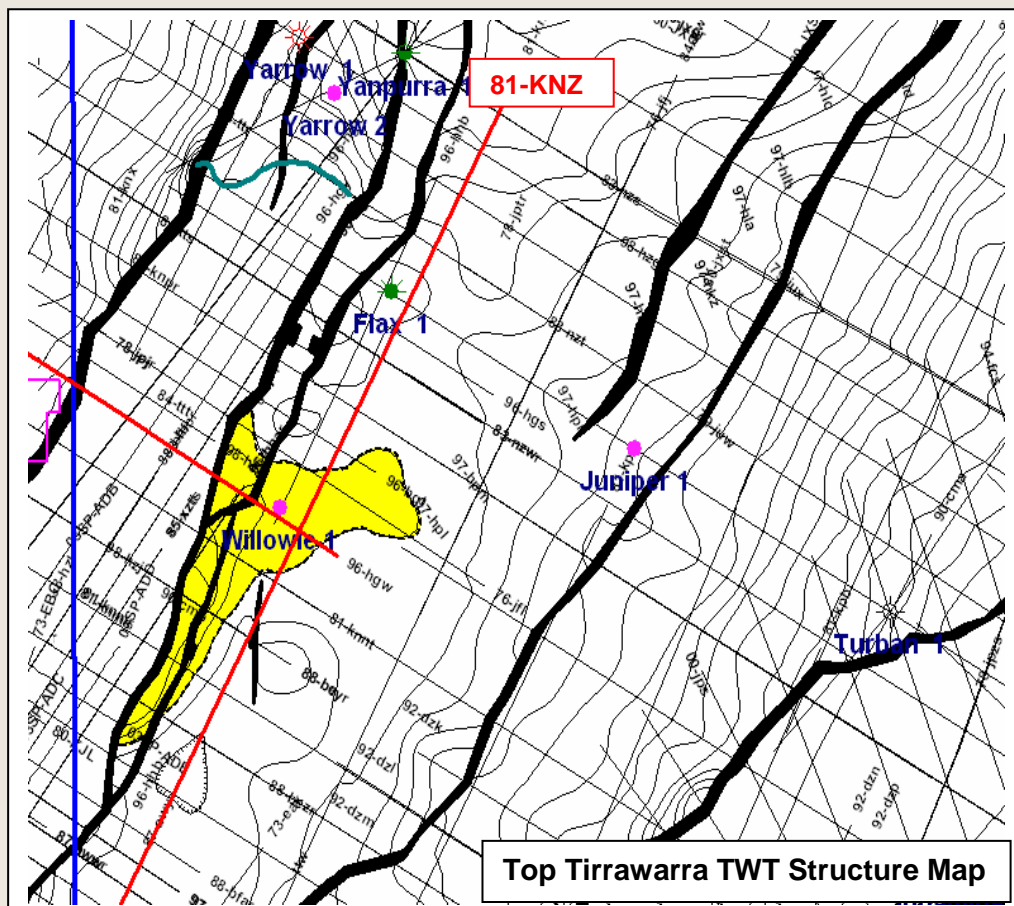
## Willowie-1

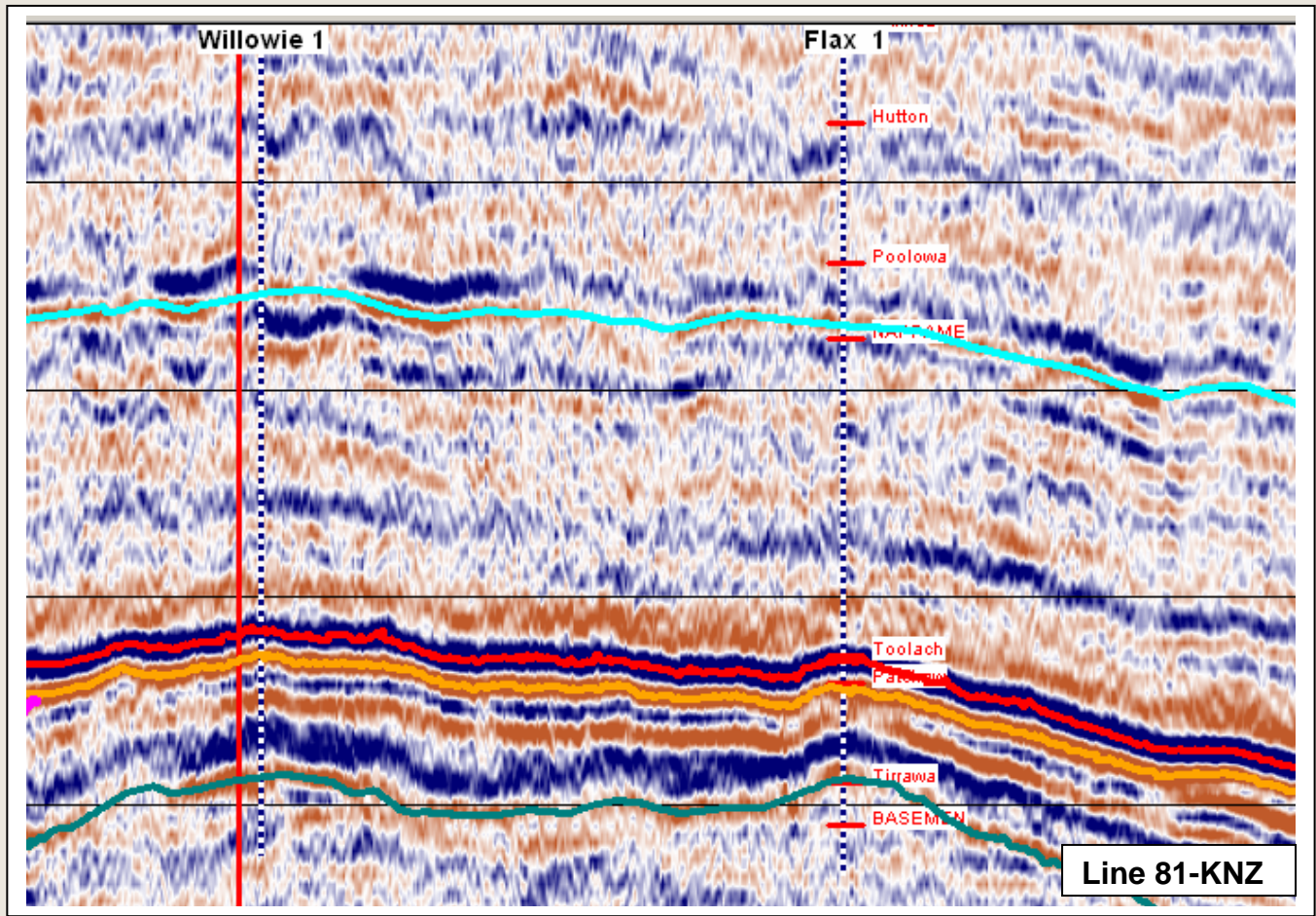
### Location

Willowie 1 is located within PEL 103, northeastern South Australia, some 100 km northeast of the Moomba oil and gas processing centre for the Cooper Basin region and 40km north of the Innamincka township.

### Overview

- The prospect is a fault dependent anticlinal play on the eastern flank of the Packsaddle High.
- The Patchawarra sandstones and the Tirrawarra sandstones are the primary targets.
- Source rocks for hydrocarbons are the carbonaceous shales and coal deposits within the Permian Toolachee and Patchawarra Formations.
- Flax 1 (drilled in Jan 2004) 4.7km to north flowed gas at 0.73 MMscfd from the basal Patchawarra and from the Tirrawarra, the well flowed gas at 1.00 MMscfd and oil at 600 BOPD .
- Gas in place potential of the Patchawarra Sandstone is estimated at 46 bcf.
- Potential of the Tirrawarra Sandstone is estimated at 47 bcf gas and 23 mmb oil, in place.





## Status

- Willowie 1 intersected oil saturated sandstones in the basal Patchawarra and Tirrawarra but due to mechanical failures, the well was not able to be tested. It was plugged and abandoned on 29/9/2004.
- Drilled to TD 2816m.
- Good oil and gas shows, but no conclusive tests.