



# YARROW 1 - TIME DEPTH CURVE

## ACTUAL VS PROGNOSED

### HOLE / CASING SIZES

311 mm (12-1/4") Surface hole to 513 m  
 245 mm (9-5/8") Surface Casing Set @ 509.1 m  
 216 mm (8-1/2") Main Hole to XXXX m (TD)  
 178 mm (7") Production Casing Set @ XXXX m

### LOCATION DETAILS

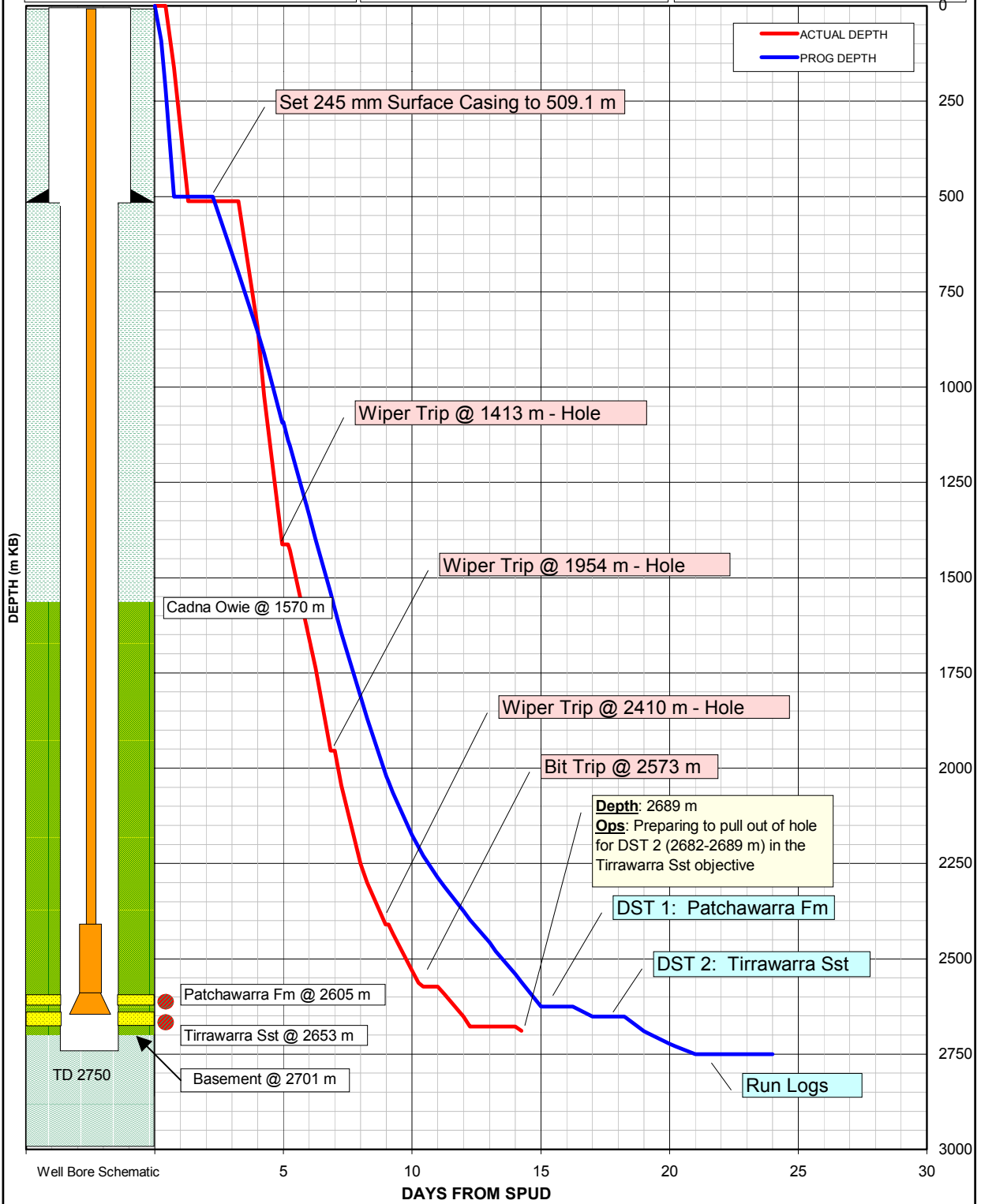
Well Type: Oil Exploration  
 Permit: PEL 103 (South Australia)  
 Distance: 100 km NE of Moomba

### WELL DETAILS

Rig: O.D.E Rig 30  
 KB: 4.7 m  
 GL: 84.4 m  
 Total Depth: 2750 m  
 Drill Days: 24 from spud

### MAJOR DATES

Well Spudded: 10:00 hrs 10 Dec 2003  
 Reached TD: XX:XX hrs XX Dec 2003  
 Rig Released: XX:XX hrs XX Dec 2003





**INNAMINCKA**  
PETROLEUM  
ACN 101 313 777

Office 1 - Ground Floor  
924 Gympie Road  
CHERMSIDE QLD 4032

PO Box 170  
ASPLEY QLD 4034  
Telephone: (07) 3359 8911  
Facsimile: (07) 3359 8985  
www.innapet.com.au

---

## ANNOUNCEMENT TO ASX

---

**Date:** 24 December 2003  
**To:** Australian Stock Exchange Limited  
Companies Announcement Office  
Electronic Lodgment System

Dear Sir

### **Daily Drilling Status Report – Yarrow 1 (PEL-103)**

Innamincka Petroleum Limited (“INP”) reports the current status of the Yarrow 1 well is as follows:

**Time of Report:** 06:00 hours (CSST) 24 December 2003  
**Well Depth:** 2689 m  
**Current Operation:** Pulling out of hole to pick up test tools for DST 2 in the Tirrawarra Sandstone Formation across the interval 2682-2689 m and will test an interval of good gas shows observed during drilling.  
**Forward Operation:** Conduct DST 2 in the Tirrawarra Sandstone Formation.  
**Well Spudded:** Yarrow 1 was spudded in at 10:00 hrs 10 December 2003

Participants in the PEL 103 Block Joint Venture are:

Innamincka Petroleum Limited (Operator)	35%*
Vernon E Faulconer Australia Inc (*Post Farm-in Interest)	65%*

Yours sincerely  
**Innamincka Petroleum Limited**

**Leni Stanley**  
Company Secretary