



INNAMINCKA
PETROLEUM
ACN 101 313 777

Office 1 - Ground Floor
924 Gympie Road
CHERMSIDE QLD 4032

PO Box 2378
CHERMSIDE QLD 4032

Telephone: (07) 3359 8988
Facsimile: (07) 3359 8985
www.innapet.com.au

ANNOUNCEMENT TO ASX

Date: 06 December 2005
To: Australian Stock Exchange Limited
Companies Announcement Office
Electronic Lodgment System

Dear Sir

Daily Drilling Status Report – Pine 1 (PEL-103)

Innamincka Petroleum Limited (“INP”) reports the current status of the **Pine 1** well is as follows:

Time of Report: 06:00 hours (CSST) 06 December 2005
Well Depth: 899 m
Current Operation: Running the 244 mm (9⁵/₈”) surface casing string.
Forward Operations: Complete running the 244 mm (9⁵/₈”) surface casing string and cement the casing. Commence preparations for drilling ahead the 216 mm (8¹/₂”) main hole

Participants in the PEL 103 Block Joint Venture are:

- | | | |
|---|---|-----|
| • Innamincka Petroleum Limited (Operator) | - | 35% |
| • Vernon E Faulconer Australia Inc | - | 65% |
| • Avery Resources Inc* | - | 0% |

* Farming in for 25% W.I. subject to terms of a farmin agreement

For further information please contact either:

Mr Ross Wecker (Managing Director) or Mr Glen Smith (Director of Operations)

(Phone: 07 3359 8988 or Fax: 07 3359 8985)

Website: www.innapet.com.au



INNAMINCKA
PETROLEUM

PINE 1 - TIME DEPTH CURVE

ACTUAL VS PROGNOSED

HOLE / CASING SIZES

311 mm (12-1/4")	Surface hole to 899 m
245 mm (9-5/8")	Surface Casing Set @ XXXX m
216 mm (8-1/2")	Main Hole to XXXX m (TD)
178 mm (7")	Production Casing Set @ XXXX m

LOCATION DETAILS

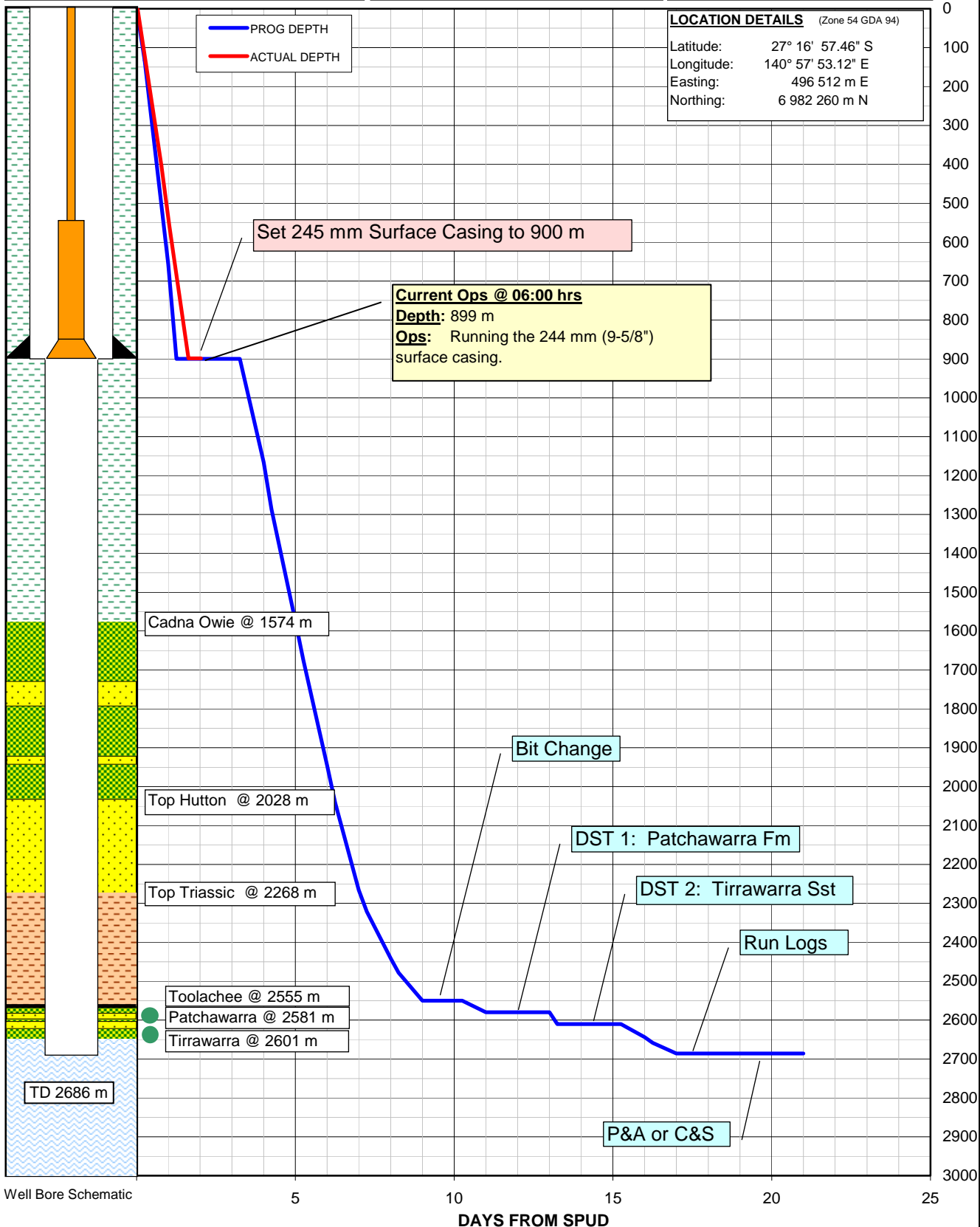
Well Type: Oil/Gas Exploration
Permit: PEL 103 (SA)
Distance: 120 km NNE of Moomba

WELL DETAILS

Rig: O.D.E Rig 30
RT: 139.8 m
GL: 135.0 m
Total Depth: 2127 m
Drill Days: 18 from spud

MAJOR DATES

Well Spudded: 05:30 hrs 04 Dec 05
Reached TD: xx:xx hrs xx xxx 05
Rig Released: xx:xx hrs xx xxx 05



LOCATION DETAILS (Zone 54 GDA 94)

Latitude: 27° 16' 57.46" S
Longitude: 140° 57' 53.12" E
Easting: 496 512 m E
Northing: 6 982 260 m N